



Productivity Six Pack

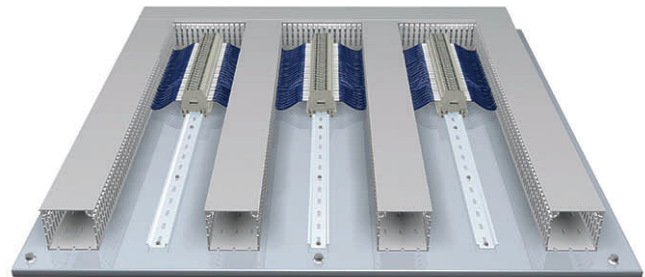
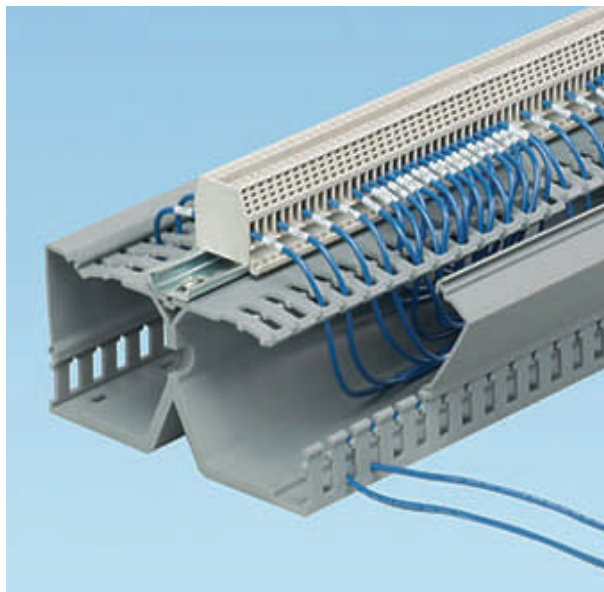
Product Ideas that save you time and money



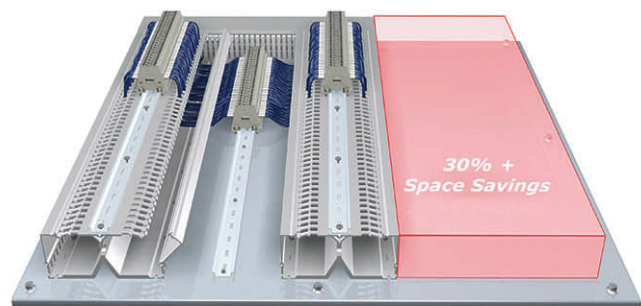
Featured New Product

PANELMAX™ DIN Rail Wiring Duct

Conventional Wiring Duct Panel Layout



DIN Rail Wiring Duct Panel Layout with
30% Space Savings



**Serving Alabama, Georgia, Indiana,
Michigan and Tennessee**

www.KendallElectric.com



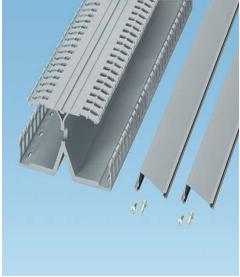
Productivity Six Pack

Product Ideas that save you time and money

Boost Productivity with These Time and Cost Saving New Products

PanelMax™ DIN Rail Wiring Duct

Innovative Wire Management Solution



- Maximizes space utilization within industrial enclosures for flexibility in panel layout and reduced material and installation costs
- Compatible with user supplied 35mm or 15mm DIN rail and many DIN rail mount components
- Three product sizes for compatibility with 2", 3", or 4" conventional wiring duct

Factory Stock

PANDUIT® Cable Bundle Organizing Tool

Reduces cable bundling installation time up to 50%!



- Arranges 24 cables prior to applying Panduit TAK-TY® Hook & Loop cable ties
- Optimizes bundle size and improves installed appearance
- Two inserts handle multiple network cable diameters
- Unique design allows twist-free from the end or from the middle of bundle

In Stock

PANDUIT GTS Cable Tie Tool

Engineered to Promote Worker Safety, Reduce Downtime and Increase Productivity



- Provides lowest installed cost
- Tool controlled tension is quick and easy to set and maintain
- Provides flush cut-off for safe installations
- Full selection of ergonomic and metal tools

In Stock

PANDUCT® PANELMAX™ Corner Wiring Duct

Space Saving One-Piece Construction

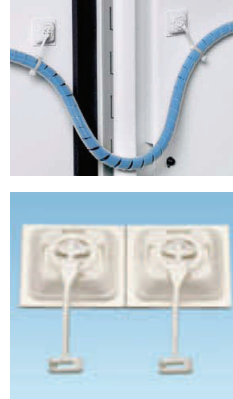


- Innovative wire management product that makes more efficient use of space inside enclosures, speeds installation, and reduces control panel assembly costs
- Used in vertical corners of medium to large electrical control panels to route, conceal and protect electrical wiring

Factory Stock

Dynamic Cable Manager

Multi-Channel System to Route, Protect and Conceal



- Transfers dynamic load of bundle away from edge of mount
- Prevents the mount from peeling away from the surface
- Retains position of bundle relative to hinge
- Eliminates the risk for potential shocks and shorts

In Stock

J-PRO™ Cable Support System

Helps Prevent Degradation of Cable Performance



- UL and CAN/ULC listed and suitable for use in air handling spaces
- Complete horizontal and vertical 1" bend radius control
- J Hooks available in 3/4", 1-5/16", 2", and 4" bundle cap.
- Color options provide means to segregate and identify cable bundles for specific applications