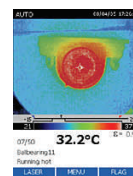
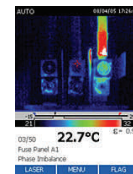
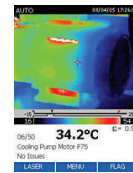


FLUKE®

Featured New Product

Fluke Ti20 Thermal Imager



Breakthrough performance for industrial maintenance applications!

A safe and easy way to identify problems and reduce unplanned downtime

- Instantly provides non-contact temperature images to quickly determine hot spots
- Fully radiometric for detailed temperature analysis and tracking of critical components
- Complete solution with InsideIR software for analysis, reporting and routing (included)

Typical Applications

- Electrical power distribution systems, such as three-phase systems, distribution panels, fuses, wiring and connections
- Electro-mechanical equipment, including motors, pumps, bearing and gear boxes
- Process instrumentation, such as process control equipment, pipes, valves, steam traps and vessels
- Facility maintenance, including HVAC systems, buildings and roofs

**Serving Alabama, Georgia, Indiana,
Michigan and Tennessee**

www.KendallElectric.com

Boost Productivity with These Time and Cost Saving New Products

Fluke Ti20 Thermal Imager

Identify problems & reduce unplanned downtime



- Puts the capabilities of thermal imaging within the hands of service and maintenance personnel who know the facility and equipment best
- Instantly provides non-contact temperature images to quickly determine hot spots.
- Fully radiometric for detailed temperature analysis
- Easy-to-use report generation software included

In Stock

Fluke 1587/MDT Advanced Motor & Drive Troubleshooting Kit

The products in this kit have been specifically selected for both troubleshooting and preventative maintenance applications



- Includes the following:
 - Fluke 1587 Insulation Multimeter
 - Fluke i400 Current Clamp
 - Fluke 9040 Phase Rotation Indicator

Factory Stock

Fluke 62 Mini Non-Contact Thermometer

Perfect introduction to infrared thermometers for professionals



- With the best accuracy in its class, the Fluke 62 Mini offers quick and reliable surface temperature readings
- Compact and portable
- Rugged enough for industrial environments with its protective rubber "boot"
- Comes with a handy nylon holster

In Stock

Fluke 1AC-II VoltAlert

The next generation VoltAlert™



- When the tip glows red and the unit beeps, you know there's voltage present
- Voltbeat™ technology and continuous self-test
- CAT IV 1000 V for added protection
- Expanded range: 90 V to 1000 V AC depending on model
- 20 V to 90 V AC control circuit model also available

In Stock

1587 Insulation Multimeter

Perform insulation tests with ease



- Two powerful tools in one: Full-featured multimeter and powerful insulation tester with up to 1000V output
- Ideal for work on motors, cables, and switch gear
- Large display with backlight
- Filter for motor drive measurements

In Stock

Fluke LVD1 Volt Light

Non-contact AC voltage detector and LED flashlight combined.



- The voltage detector glows blue when it's near AC voltage, and glows red when it's at the source
- Convenient, compact design
- Exclusive dual-sensitivity
- Ultra-bright white LED with 100,000 hour bulb life
- AAA battery included

In Stock